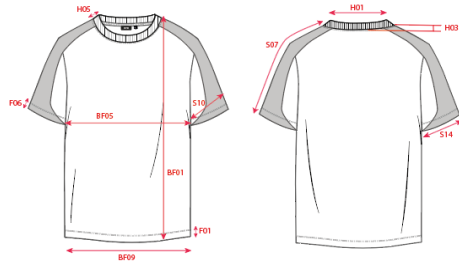


Production Size Specification



| | |
|-------------------|----------------------------|
| STYLE NO | 106106 |
| STYLE DESCRIPTION | T--shirt Bicolor Redefined |
| FIT | T-shirt |
| GENDER | Unisex |
| DATE | 18-11-2025 |
| VERSION | V1 |

| Measurement | XS | S | M | L | XL | XXL | 3XL | 4XL | 5XL | TOL | AQM |
|--|------|------|------|------|------|------|------|------|------|-----|-----|
| BB01 Total backl meas from hsp | 68.0 | 70.0 | 72.0 | 74.0 | 76.0 | 78.0 | 80.0 | 82.5 | 83.8 | 1.0 | X |
| BF05 1/2 chest (at armhole) | 44.0 | 48.0 | 52.0 | 56.0 | 60.0 | 64.0 | 68.0 | 74.0 | 80.0 | 1.0 | X |
| BF09 1/2 Bottom | 44.0 | 48.0 | 52.0 | 56.0 | 60.0 | 64.0 | 68.0 | 74.0 | 80.0 | 1.0 | X |
| S07 Upper arm length raglan sleeve short | 33.8 | 35.0 | 36.3 | 37.5 | 38.8 | 40.0 | 41.3 | 42.3 | 43.3 | 1.0 | X |