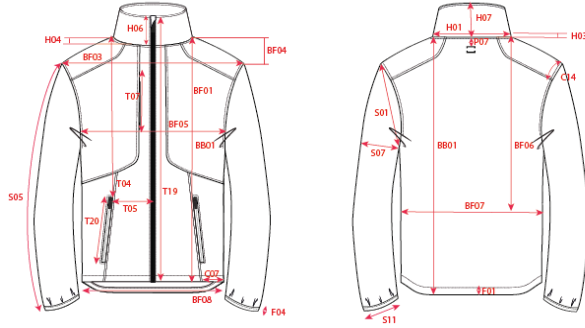


TRICORP

Production Size Specification



STYLE NO	406103
STYLE DESCRIPTION	Softshell Redefined
FIT	Jas
GENDER	Unisex
DATE	19-11-2025
VERSION	V1

Measurement		XS	S	M	L	XL	XXL	3XL	4XL	5XL					TOL				AQM
BB01	Total backl meas from hsp	69.0	71.0	73.0	75.0	77.0	79.0	81.0	83.5	84.8					1,0				X
BF03	Shoulder to shoulder	40.5	43.0	45.5	48.0	50.5	53.0	55.5	57.5	59.5					1,0				X
BF05	1/2 chest (at armhole)	48.0	52.0	56.0	60.0	64.0	68.0	72.0	78.0	84.0					1,0				X
BF08	1/2 Bottom	46.0	50.0	54.0	58.0	62.0	66.0	70.0	76.0	82.0					1,0				X
S05	Upper arm length long sleeve	69.5	70.5	70.5	71.5	72.5	73.5	73.5	74.5	75.5					0,5				X