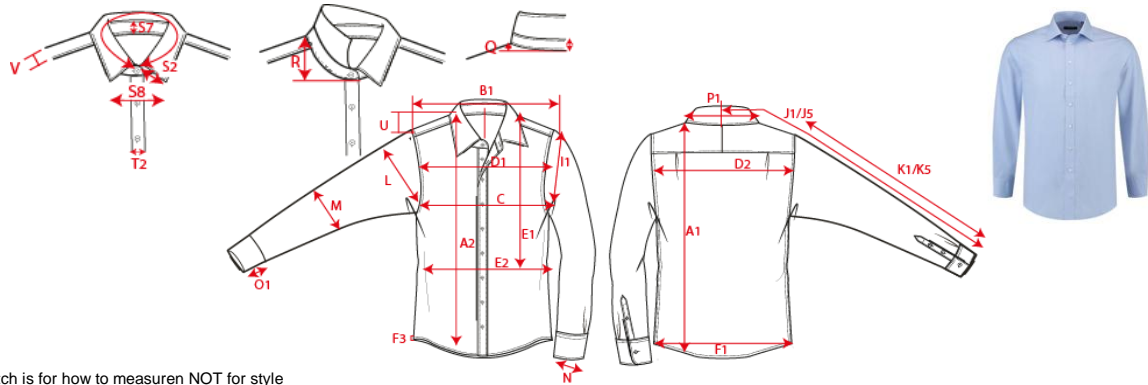


Production Size Specification

TRICORP



STYLE NO	705005
STYLE DESCRIPTION	Overhemd basis
FIT	Blouse
GENDER	Unisex
DATE	20-9-2022
VERSION	V1

Sketch is for how to measure NOT for style

		37	38	39	40	41	42	43	44	45	46	47	48	49	50	Tot				
A1	Total back meas from CBN	82	82	83	83	83	83	83	83	84	84	84	84	85	85	1,0				
B1	Shoulder to shoulder	45.5	45.5	47	47	48.5	48.5	50	50	51.5	51.5	53	53	54.5	54.5	1,0				
C	1/2 chest (at armhole)	56	56	58	58	61	61	64	64	67	67	70	70	73	73	1,0				
E2	1/2 Waist width (for size L 42cm from hsp)	52	52	54	54	57	57	60	60	63	63	66	66	71	71	1,0				
F1	1/2 Bottom	56	56	58	58	61	61	64	64	67	67	70	70	73	73	1,0				
I1	Armhole straight	22.6	22.6	23	23	23.2	23.2	23.4	23.4	23.5	23.5	23.7	23.7	23.9	23.9	0.3				
K1	Upper arm length long sleeve 5	66	66	66.5	66.5	67	67	67.5	67.5	68	68	68.5	68.5	69	69	0.3				
K5	Upper arm length long sleeve 7	69	69	69.5	69.5	70	70	70.5	70.5	71	71	71.5	71.5	72	72	0.3				
P2	Neckring from CF till CF	37.5	38.5	39.5	40.5	41.5	42.5	43.5	44.5	45.5	46.5	47.5	48.5	49.5	50.5	0.3				